

DVOUCELÁ NOTA (JSOU 3 MOŽNOSTI, JAK DVOUCELOU NOTU PSÁT)



CELÁ NOTA



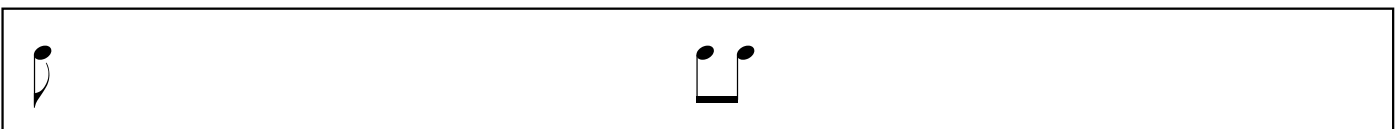
PŮLOVÁ NOTA



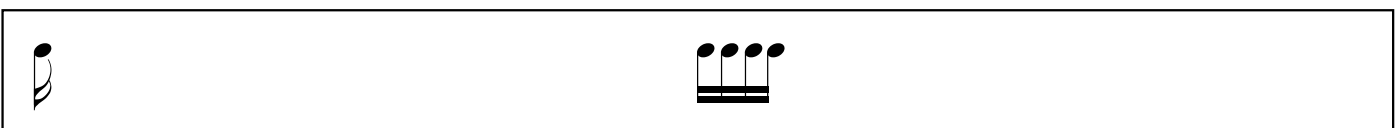
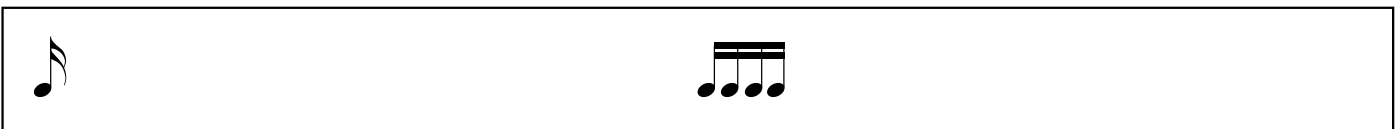
ČTVRŤOVÁ NOTA



OSMINOVÁ NOTA

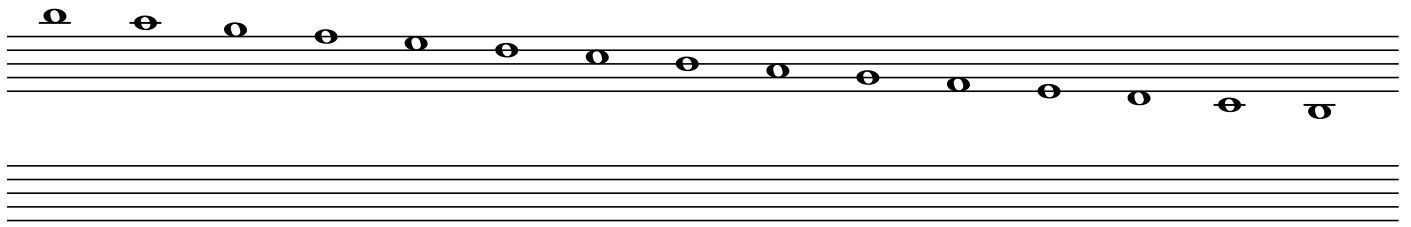


ŠESTNÁCTINOVÁ NOTA



(OPIŠTE UKÁZKY)

CELÉ NOTY



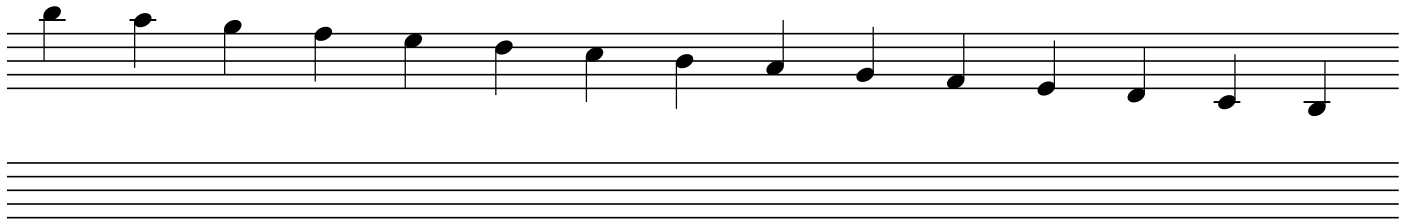
A musical staff showing a sequence of 15 whole notes (semibreves) in a C major scale, starting from middle C (C4) and ending on the next C (C5). The notes are: C4, D4, E4, F4, G4, A4, B4, C5, B4, A4, G4, F4, E4, D4, C4.

PŮLOVÉ NOTY



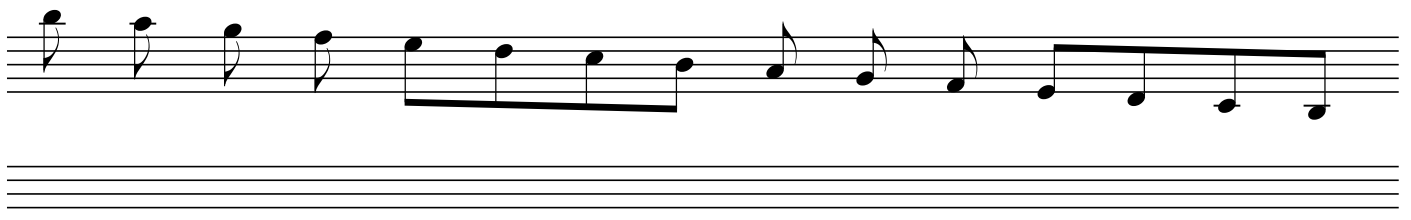
A musical staff showing a sequence of 15 half notes (minims) in a C major scale, starting from middle C (C4) and ending on the next C (C5). The notes are: C4, D4, E4, F4, G4, A4, B4, C5, B4, A4, G4, F4, E4, D4, C4.

ČTVRŤOVÉ NOTY



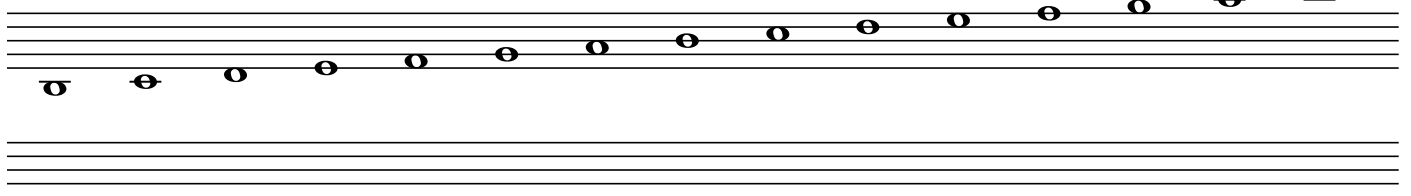
A musical staff showing a sequence of 15 quarter notes (crotchets) in a C major scale, starting from middle C (C4) and ending on the next C (C5). The notes are: C4, D4, E4, F4, G4, A4, B4, C5, B4, A4, G4, F4, E4, D4, C4.

OSMINOVÉ NOTY



A musical staff showing a sequence of 15 eighth notes (quavers) in a C major scale, starting from middle C (C4) and ending on the next C (C5). The notes are: C4, D4, E4, F4, G4, A4, B4, C5, B4, A4, G4, F4, E4, D4, C4.

CELÉ NOTY

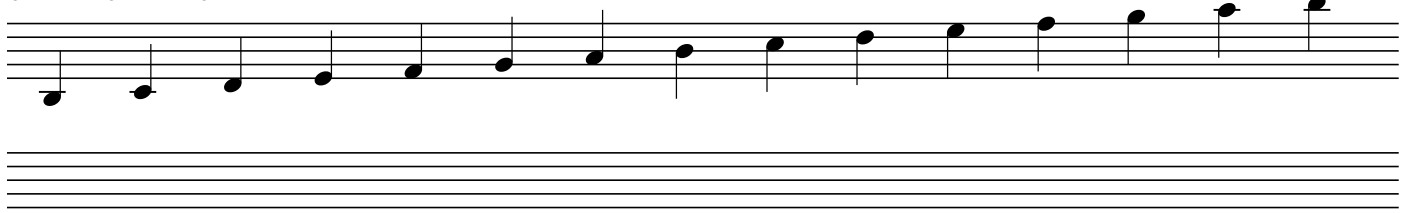
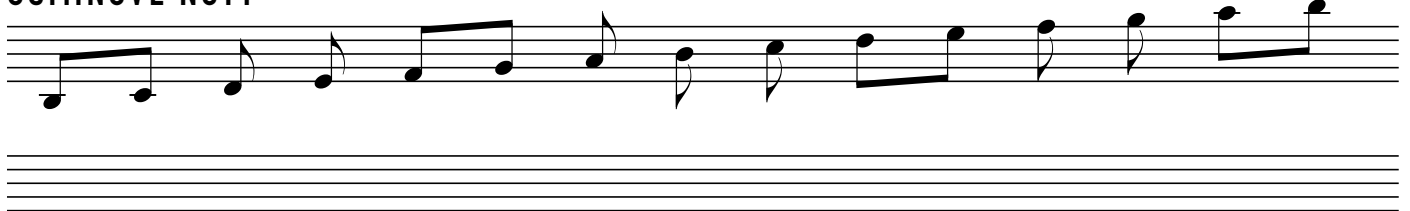


A musical staff showing a sequence of 15 whole notes (semibreves) in a C major scale, starting from middle C (C4) and ending on the next C (C5). The notes are: C4, D4, E4, F4, G4, A4, B4, C5, B4, A4, G4, F4, E4, D4, C4.

PŮLOVÉ NOTY

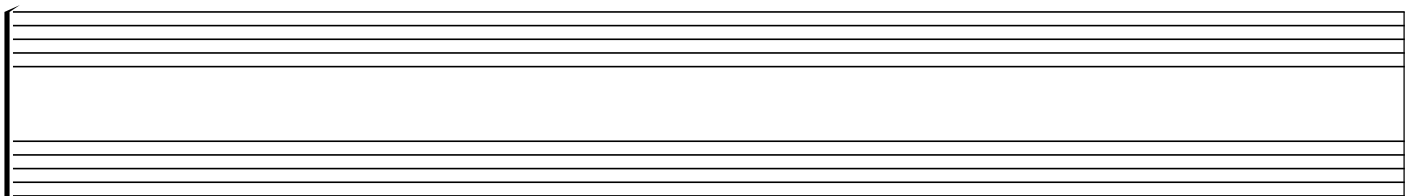
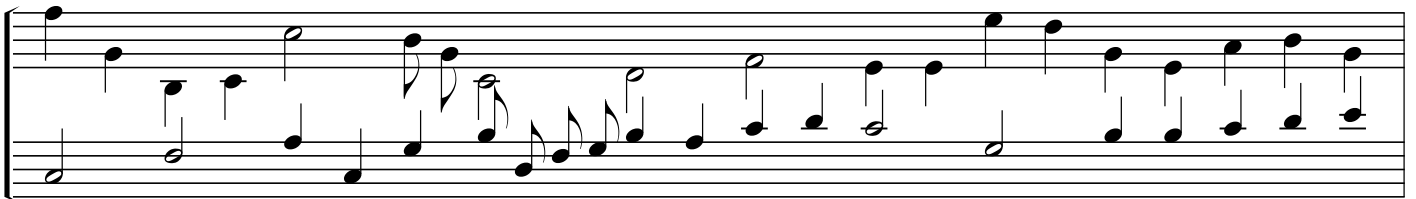


A musical staff showing a sequence of 15 half notes (minims) in a C major scale, starting from middle C (C4) and ending on the next C (C5). The notes are: C4, D4, E4, F4, G4, A4, B4, C5, B4, A4, G4, F4, E4, D4, C4.

ČTVRŤOVÉ NOTY**OSMINOVÉ NOTY**

NOTOVÉ NOŽKY PÍŠEME (PODLE POTŘEBY) NAHORU NEBO DOLŮ. JE TO PROTO, ABY SI VZÁJEMNĚ NEPŘEKÁŽELY.

OPIŠTE A POROVNEJTE NÁSLEDUJÍCÍ DVA PŘÍKLADY:

PŘÍKLAD 1**PŘÍKLAD 2**